

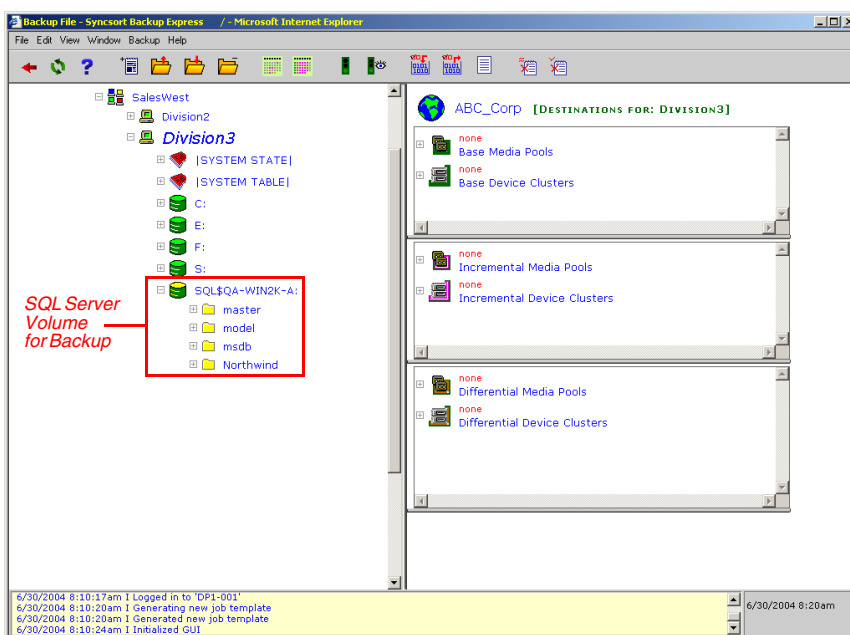
Backup Express for Microsoft SQL Server

Microsoft SQL Server supports a wide range of business applications, including ERP, CRM, data warehousing, OLAP, and E-commerce. The Backup Express Microsoft SQL Server Database Agent interfaces with the standard Microsoft backup API to provide a flexible, database-specific backup and restore solution for your critical SQL Server data.

Advanced Backup Express architecture – including single catalog, centralized browser-based control, and exceptional flexibility for SANs and clusters – ensures high-performance, easily managed online database backups and fast, dependable, point-in-time recovery.

Technical Capabilities

- **Auto-Discovery.** Backup Express automatically detects SQL objects and displays them in the GUI for backup selection. No additional administrator steps are needed.
- **Online Backup.** Non-disruptive protection ensures databases remain fully accessible to users during backup.
- **LAN-Free Backup in Heterogeneous SAN Environments.** Backup Express supports any combination of UNIX, Linux, Windows, NetWare and NDMP/NAS in a SAN. It is the only backup product that can dynamically share drives across all these platforms at the same time in the same SAN. Optimized device selection and intelligent SCSI reserve/release features enables use of SAN path whenever possible, keeping data off the LAN.
- **Backup and Restore Granularity.** Backups include configuration files, logs, and databases and provide the same backup/restore granularity as the SQL Server backup API.
- **Multiple Backup Modes.** Base, differential, or incremental backup of databases and transaction logs.
- **Point-in-Time Recovery.** Restores SQL databases to an exact point in time.
- **Superior Clustering Support.** Backup Express supports clusters for Microsoft Exchange and Microsoft SQL Server on Windows NT/2000/XP/2003. For cluster aware applications, Backup Express displays shared resources as one virtual entity and supports both active-passive and active-active clusters.
- **Script Facilities.** Pre- and post-script capabilities enable Backup Express to automatically run customized commands, such as shutting down or reviving a database, before or after a job.
- **Parallel Performance.** Offline database backups can use file and partition splitting to write to any number of drives in parallel, improving backup/restore performance for massive tables by at least 50 percent.
- **Advanced, Browser-Based Graphical User Interface.** The Backup Express browser-based GUI allows user to work in multiple function windows at the same time, and to run, manage and monitor multiple device related functions in parallel. Point-and-click, drag-and-drop features simplify configuration, backup definition, scheduling, and other functions.
- **Multiple Server Support.** Support for multiple devices connected to multiple servers allows backups to run concurrently, dramatically accelerating processing and sharing the load among servers so no machine is I/O bound.
- **Syncsort OSSV for NetApp.** Syncsort Open Systems SnapVault (OSSV) for SQL Server 2000 provides high-performance snapshot backup to NearStores or filers. "Incrementals forever" reduces backup time and storage requirements. For SQL Server 2000 on Windows 2003, Syncsort OSSV utilizes VSS (Microsoft Volume Shadow Copy Service). The Instant Availability feature quickly restores application use after an interruption. ExpressDR utilizes Syncsort OSSV backups to rapidly recover an entire node, including MS Exchange 2003 and SQL Server 2000.



Backup Express for Microsoft SQL Server

How It Works

The Backup Express interface for Microsoft SQL Server is fully integrated with the Backup Express GUI. This integration allows you to back up and restore online SQL Server databases in the same centralized environment where you back up and restore all your other data. You simply point and click to choose which databases to back up and restore, without bringing down the SQL Server or leaving the Backup Express GUI.

Backup Express communicates directly with MS SQL Server to perform online backups and restores. By using the MS SQL Server backup API (SQL DUMP/LOAD, SQL DMO), Backup Express ensures the integrity of the data it receives from SQL Server. Backup Express then controls the movement of this data to disk or tape storage devices.

Using Backup Express to back up SQL Server allows you to consolidate all your backups within a single product with a single interface and single catalog. The catalog tracks saved data for simplified management, eliminating the need to define a master server at each SQL Server node. Simply keep your current Backup Express master server and install a Backup Express client on each SQL Server node.

Because the SQL Server interface is integrated with the Backup Express GUI and Backup Express automatically detects SQL Server objects, you don't have to install additional software to run backups and restores with SQL Server.

Requirements/Compatibility

- **Backup Software.** Backup Express 2.1.5 or higher. Syncsort OSSV requires Backup Express 2.3 or higher.
- **Microsoft SQL Server Software.** Microsoft SQL Server versions 6.5, 7.0, and 2000 on Windows NT/2000/XP/2003. Syncsort OSSV support requires SQL Server Service Pack 2 or higher.
- **NetApp Licenses.** All SnapVault operations require NetApp secondary and primary licenses. SnapVault support requires NetApp Data ONTAP release 6.5 or higher. For Backup Express Instant Availability, the storage device also requires NetApp iSCSI.
- **Supported Peripherals.** Backup Express is fully certified with most SAN, NAS, disk, library, switch and operating system vendors.

Supports most storage media, including 4mm, DDS2, DDS3, DDS4, DAT72, 8mm, AIT-1, AIT-2, AIT-3, Super-AIT (SAIT), Mammoth, Mammoth-2, Ecrix VXA and VXA-2, vs80, DLT1, DLT4000, DLT7000, DLT8000, SDLT-220, SDLT-320, SDLT-600, LTO-1, LTO-2, 9840x, 9940x, QIC, Sony DTF-1 and DTF-2, Magstar, and IBM 348x/349x/35xx.

Supports all major automated tape libraries, including ADIC, Breece Hill, Compaq, Cybernetics, Dell, DSM, Exabyte, GRAU Data Storage, HP, IBM, Overland Storage, Plasmon, Qualstar, Quantum/ATL, Seagate, Sony, Spectra Logic, StorageTek, and Sun.

Backup Express Database & Application Agents

- DB2 with Universal Database EE/EEE
- Informix
- Lotus Notes/Domino
- Microsoft Exchange
- Microsoft SQL Server
- MS SharePoint Portal Server
- Novell GroupWise for NetWare
- Novell NetWare NDS and eDirectory
- Oracle
- SAP/R3
- Sybase

Contact Information

- **World Headquarters (USA)**

Syncsort Inc
(201) 930-8200
info@syncsort.com

- **United Kingdom**

Syncsort Ltd.
(44) 1 732 849000
pterrell@syncsort.com

- **France**

Syncsort S.A.
(33) 1 46 31 22 22
csaliou@syncsort.com

- **Germany**

Syncsort GmbH
(49) 2102 95460
blokamp@syncsort.com



syncsort