

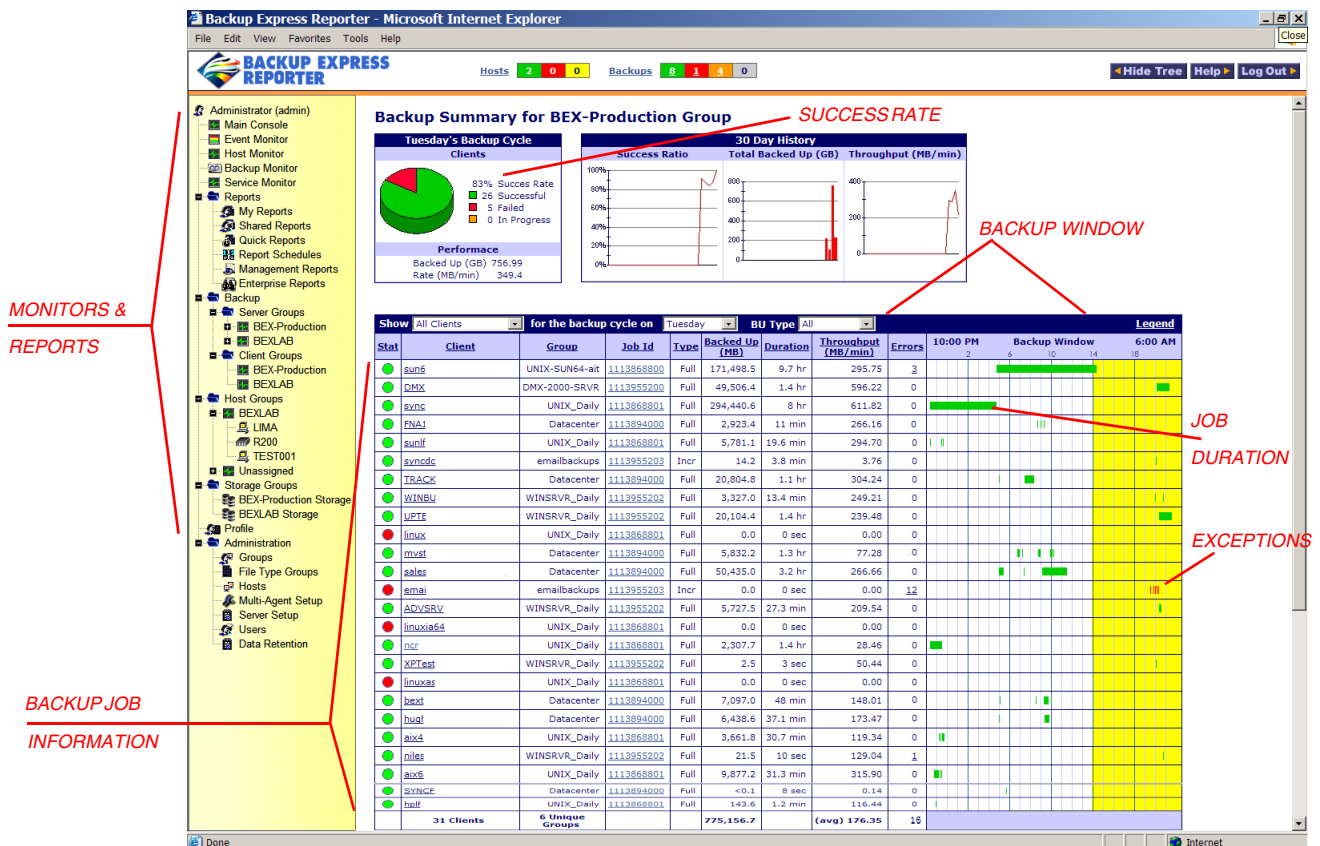
Backup Express Reporter

Backup Express Reporter is a browser-based system management tool that provides real-time monitoring of backup jobs and generates enterprise-level summary information that helps administrators optimize backup processing within the context of overall system activity. From a single web-based GUI, viewable from any node that can access the Reporter server, Reporter gives administrators the ability to easily assess current and historical activity throughout the Enterprise.

Reporter helps administrators monitor backups and schedule backups for completion within a predefined processing window to reduce load on the master server, device servers, clients, and network. Administrators and managers can examine success/failure ratios and view the cumulative amount of data backed up alongside views of backup environment performance.

Features and Benefits

- **Node perspective.** Provides information from the server and client perspective in addition to job perspective and displays backup sizes and job throughput per node.
 - **Monitoring.** Enables real-time monitoring of backup job status on all nodes, including in-progress, inactive, failed, and successful jobs. Alerts administrators to job failures and interruptions and helps them pinpoint time and cause.
 - **Post-job reports.** Summarizes exceptions and cumulative number of bytes backed up. Reports also display the number of bytes backed up per job and success/failure ratio within a specified period.
- **Trending.** Provides trending information for backups, including total data backed up in the Enterprise, throughput, and success rate summaries.
 - **Forecasts.** Predicts available disk space based on backup history and storage capacity.
 - **Multiple server data.** Provides a cumulative view if multiple backup master servers are deployed.
 - **Master server reports.** Indicates operating system performance, including available disk space, network usage, HBA card status, and system errors.
 - **Detail.** Provides information sufficiently detailed to correlate server behavior with backup behavior.



Backup Express Reporter

- **Exception reports.** Predefined daily and cumulative reports identify failed and inactive jobs by client and client group. Reports also provide group details, weekly summaries per group, server details, server summaries, and server weekly summaries.
- **Media reports.** Displays detailed media information, including listings of free tapes per media pool, tapes requiring removal from the tape library, and tapes that can be brought back into production. A pre-defined report lists tapes for jukebox export and import. Sub-reports include jobs, onsite, offsite-to-onsite, onsite-to-offsite, tape pools, and job listings per tape.
- **Customizable Reporting.** A report wizard and many templates enable administrators to design reports to meet specific analysis needs. The report wizard can be used to modify existing reports, create new ones, and define sets of reports.
- **Systems Reports.** Dozens of pre-defined reports enable administrators to monitor system activity, including disk, multiprocessor, and network performance; event logs; up/down time per group, host, and operating system; detailed NAS statistics; and storage analysis by file age, file rules, and file type usage at all system levels.
- **Notifications.** Versatile notification system can utilize e-mail, Web, SNMP for third party applications, and paging.

Network Appliance Reporting

Reporting for Network Appliance (NetApp) storage devices is an optional, separately licensable feature. Capabilities include:

- Access to multiple filers and vfilers from the single Reporter GUI.
- Trending data on the volume, qtree, and vfiler levels.
- Alerts and notifications.
- Directory-level analysis and information on shares.
- Resource usage forecasts based on trends.

Requirements/Compatibility

- Reporter Server
 - Operating system: Windows 2000 and higher. A dedicated Reporter server is recommended.
 - Memory: 512 MB
 - Disk Space: 150 MB installation. 1 GB free space is recommended for database growth.
- Backup Express release 2.1.4 and higher.

- Web Interface
 - Internet Explorer 5.5 and higher
 - Netscape 6.0 and higher
 - Mozilla 1.0 and higher
 - Mozilla Firefox
- Backup Express master servers, including Windows NT/2000/XP/2003 Server, Solaris, Linux, IBM AIX, HP-UX, and Tru64.

Contact Information

World Headquarters (USA)

Syncsort Inc.
(201) 930-8200
info@syncsort.com

United Kingdom

Syncsort Ltd.
(44) 1 732 849000
pterrell@syncsort.com

France

Syncsort S.A.
(33) 1 46 31 22 22
csaliou@syncsort.com

Germany

Syncsort GmbH
(49) 2102 95460
blokamp@syncsort.com



NetworkAppliance®



syncsort